

### Items Supplied >

DESCRIPTION:	QUANTITY:
1. Freeway Bar	x1
2. Horn Relocation Bracket	x1
3. M10 x 130MM Bolt	x1
4. M10 Serrated Nut	x1
5. M10 Washer	x1

### Application(s) >

MAKE:	MODEL:	YEAR:
HONDA	REBEL 300	17-23

### Instruction Manual >

01-1108B

Page 1 of 3

Read all instructions carefully before installing your new Cobra® product!

**NOTE: Cobra Freeway Bars add style to your motorcycle. They are not designed to withstand a serious impact and may not protect you and/or your motorcycle in the event of a crash.**

1. Remove any accessories that may prohibit the installation of your new freeway bar.
2. Cover the rear portion of the front fender with masking tape to prevent it from getting scratched during installation.
3. Remove the bolt securing the horn to the stock horn bracket and set aside for reuse. See **FIGURE 1**.
4. Remove the left-side upper bolt securing the stock horn bracket to the motorcycle frame from the threaded boss and set aside for reuse. See **FIGURE 1**.
5. Remove the right-side upper bolt from the threaded boss on the motorcycle frame and set aside for reuse. See **FIGURE 2**.



FIGURE 1

STOCK HORN  
BOLT

STOCK HORN  
BRACKET

LEFT-SIDE  
UPPER BOLT

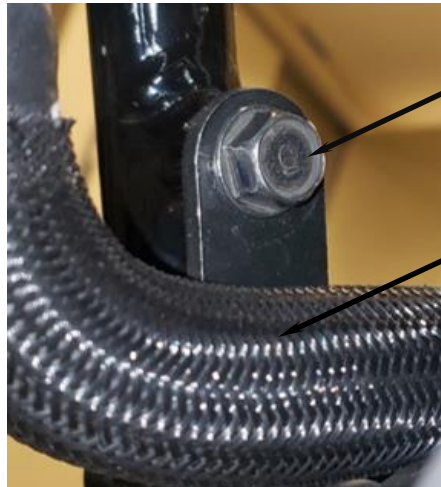


FIGURE 2

RIGHT-SIDE  
UPPER BOLT

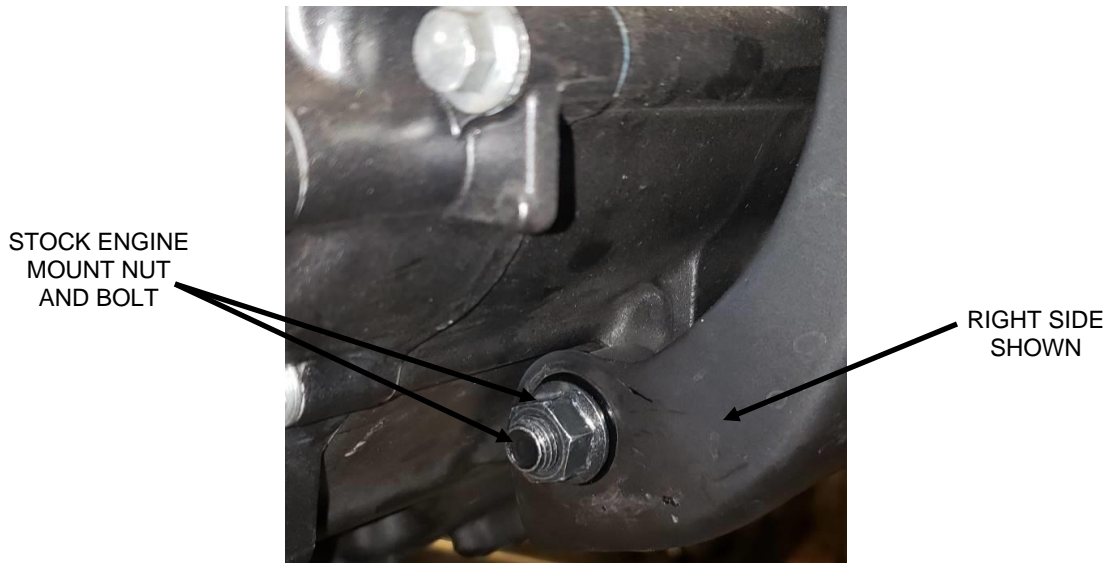
RADIATOR  
HOSE

### CLEANING INSTRUCTIONS:

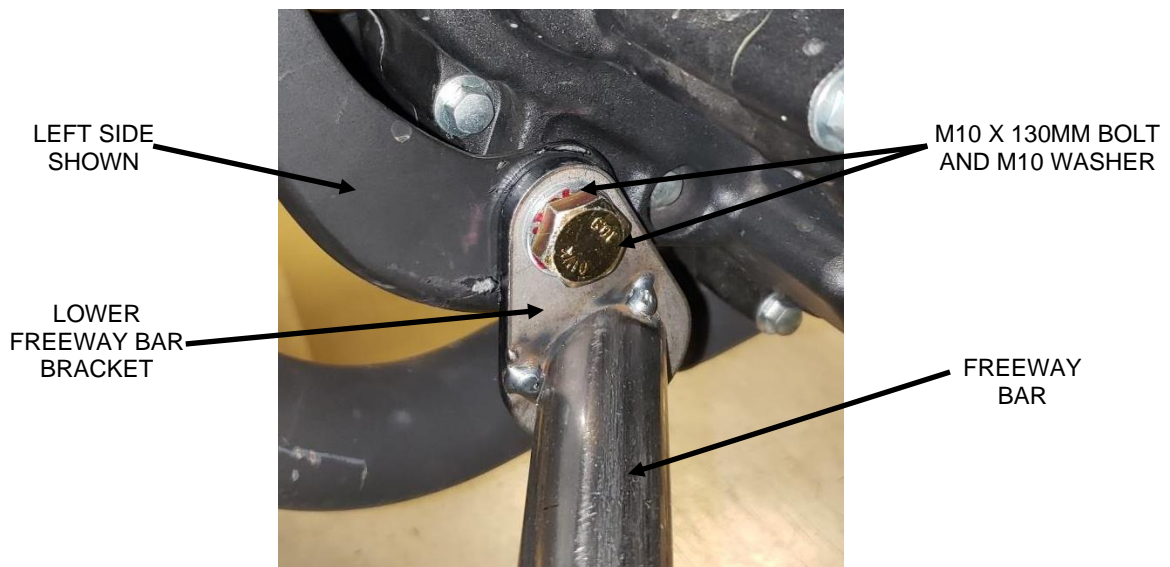
To clean your black freeway bars use a liquid based soap detergent, such as dishwashing soap applied with a soft cloth and rinse with clean water. **Note: Avoid abrasive cleaning methods such as granular or dry cleansers, simple green, Scotch-Brite or steel wool pads. Abrasives may breach the coating and shorten life.**

*\*Cobra® recommends you always wear a helmet while riding. Please never operate your motorcycle while under the influence of alcohol and/or drugs. Enjoy the new look of your motorcycle and please ride safely.*

6. Remove the lower engine mount nut and bolt from the motorcycle and discard. See **FIGURE 3**.
7. If possible, use an assistant to help hold the freeway bar during installation. Carefully position the freeway bar between the lower engine mount and front tire. Make sure not to capture or pinch any cables or wires with the freeway bar.
8. Slide the lower freeway bar brackets over the outside of lower engine mount and align the holes. Then insert the provided M10 x 130mm bolt with washer through the left-side lower freeway bar bracket, through the lower engine mount, and then through the right-side lower freeway bar bracket. Secure with the provided M10 serrated nut. See **FIGURE 4**. Snug the bolt but do not tighten at this time.



**FIGURE 3**



**FIGURE 4**

9. Carefully rotate the top of the freeway bar towards the upper frame until the upper freeway bar brackets align with the upper threaded bosses. **Be mindful of the radiator hose during installation.** Insert the stock bolt from Step 5 through the right-side upper freeway bar bracket and into the threaded boss in the frame. See **FIGURE 5**. Snug the bolt but do not tighten at this time.
10. Insert the stock bolt from Step 4 through the provided horn relocation bracket, through the left-side upper freeway bar bracket, and into the threaded boss in the motorcycle frame. See **FIGURE 6**. Snug the bolt but do not tighten at this time.
11. Install the horn onto the provided relocation bracket using the stock bolt from Step 3 and tighten securely. See **FIGURE 6**.
12. Make sure the freeway bar is positioned correctly and is not interfering with or pinching any cables or wires. Then fully tighten both the left and right-side upper stock bolts, followed by the lower engine mount nut and bolt. Retighten all (4) bolts after the first ride, after the first 500 miles, and at every engine service thereafter.

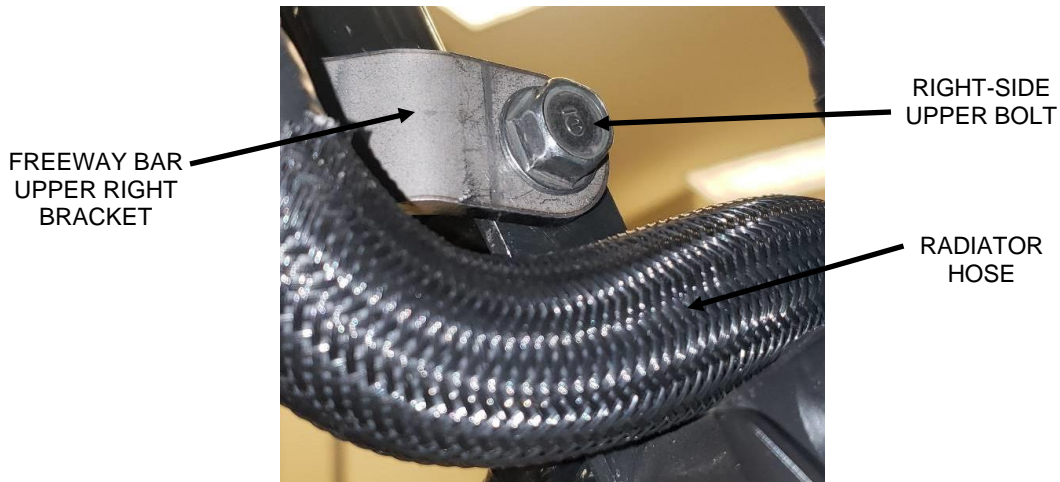


FIGURE 5

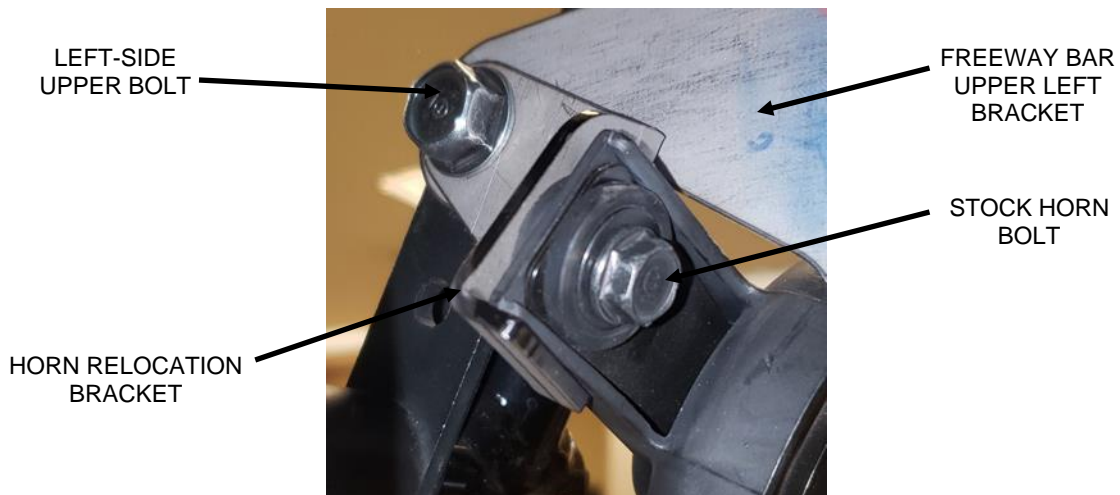


FIGURE 6