

## Items Supplied >

1 - K&N® CONE AIR FILTER      3 - FLAT WASHERS  
 1 - HOSE CLAMP  
 1 - BLACK TUBE ASSEMBLY  
 1 - SPACER  
 2 - INTAKE GASKET  
 1 - BACKING PLATE  
 1 - BILLET ADAPTER PLATE  
 2 - BREATHER BOLT, 3/8"-16 X 1" W/ TEFLON SEALANT  
 3 - BOLT, 1/4"-20 X 1-1/2", BUTTONHEAD W/ LOCK PATCH  
 1 - LARGE O-RING  
 1 - SMALL O-RING

## Application(s) >

HARLEY:  
 DRESSER      17-20

**NOTE: DOES NOT FIT CVO MODELS.**

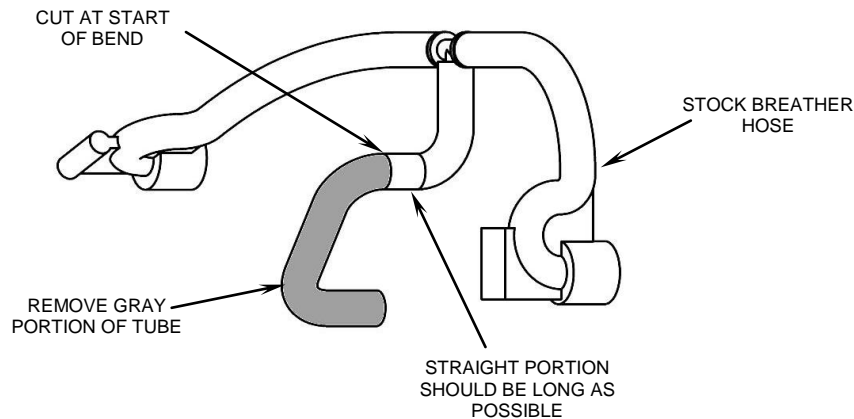
## Instruction Manual >

606-0101-06B

Page 1 of 2

**Read all instructions carefully and completely before installing your new air intake.**

1. Remove the allen bolt from the center of the stock air cleaner and remove the cover. Remove the (3) bolts securing the filter to the throttle body and remove the filter and breather hose assembly. Save the stock breather hose assembly as this will be reused. Remove the two breather bolts from the cylinders and remove the back cover.
2. Cut off the end of the center breather hose as shown in **FIGURE 1**. Cut the tube near the start of the bend so that the straight portion is as long as possible.



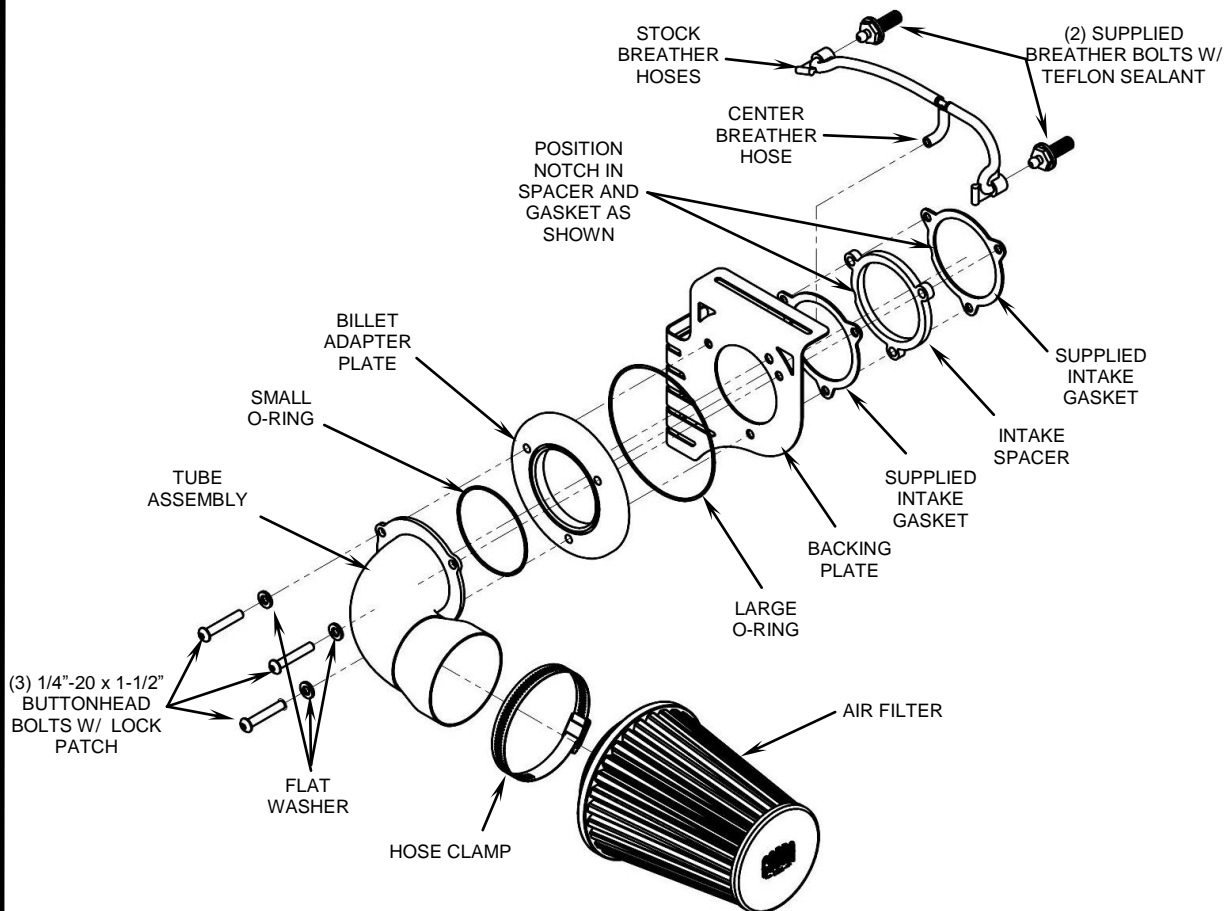
**FIGURE 1**

3. Install the supplied breather bolts into the cylinders. See **FIGURE 2**. Tighten securely.
4. Insert the center hose of the stock breather hose assembly through the hole in the supplied backing plate so that there is about 1/8" sticking out the other side. This will get pushed into the billet adapter plate in later steps. See **FIGURE 2**.
5. Place the small and large o-rings onto the grooves of the billet adapter plate. A small amount of grease may be needed to hold the o-rings into position. See **FIGURE 2**.
6. Starting with the air filter tube assembly, stack all the parts together in the proper order according to **FIGURE 2**. Make sure the breather hose pushes into the billet adapter plate and that the o-rings are seated properly in the grooves. Also check to make sure the spacer and gaskets are aligned properly with the notch to the bottom left side.

CONTINUED ON PAGE 2

**DISCLAIMER: NOT LEGAL FOR SALE OR USE IN CALIFORNIA ON ANY POLLUTION CONTROLLED MOTOR VEHICLES.**

7. While holding that assembly together with one hand, insert the (3) supplied 1/4"-20 x 1-1/2" buttonhead bolts through the flat washers, tube assembly flange and all other components. See **FIGURE 2**.
8. Then align all the components with the throttle body and start threading the (3) buttonhead bolts into the throttle body. Tighten the three bolts evenly.
9. Attach the stock breather hoses to the breather bolts in the cylinder head.
10. Place the supplied HS-48 clamp around the rubber boot of the K&N® filter so that the clamp screw will be on the inside and facing down. Then slide the filter onto the tube as far as it will go. Align the logo on the front cover so that it is level with the ground and tighten the clamp. See **FIGURE 2**.
11. Verify all the bolts are tight and then wipe off any fingerprints with a clean microfiber cloth.



**FIGURE 2**

**CLEANING INSTRUCTIONS:** To clean any black portions of the air intake system use a liquid based soap detergent, such as dishwashing soap applied with a soft cloth and rinse with clean water. Note: Avoid abrasive cleaning methods such as granular or dry cleansers, simple green, Scotch-Brite or steel wool pads. Abrasives may breach the coating and shorten life.

**DISCLAIMER:** NOT LEGAL FOR SALE OR USE IN CALIFORNIA ON ANY POLLUTION CONTROLLED MOTOR VEHICLES.