

Items Supplied >

DESCRIPTION:	QUANTITY:
1. License Plate Relocator	x1

Application(s) >

MAKE:	MODEL:	YEAR:
HONDA	GROM	22-23

Instruction Manual >

05-9007B

Page 1 of 5

Read all instructions carefully before installing your new Cobra® product!

1. Remove the rider seat and set aside.
2. Disconnect the electrical plug for the turn signal harness. See **Figure 1**.
3. Remove the two bolts that secure the seat latch mechanism and set aside for reuse. Position the latch away from the workspace to make it easier to feed the electrical plug through the plastic hole in the subframe. See **Figure 2**.
4. Remove the four bolts securing the rear fender assembly and set aside for reuse. Carefully feed the turn signal harness plug through the plastic hole in the subframe and remove the fender. Take caution not to let the fender drop during removal. See **Figure 2**.



TURN SIGNAL
HARNESS PLUG

FIGURE 1

5. Remove the five fender trim bolts from the bottom of the rear fender and remove the plastic cover and discard. See **Figure 3**.
6. Slide the rubber boot down the wiring harness to expose the turn signal electrical clips. Disconnect the four electrical clips. See **Figure 4**.
7. Loosen the nuts securing the turn signals and remove the turn signals by sliding the nuts over the electrical clips and feeding the clips through the mounting hole. Retain both of the nuts as they will be reused. See **Figure 4**.

*** Cobra® recommends you always wear a helmet while riding. Please never operate your motorcycle while under the influence of alcohol and/or drugs. Enjoy the new look of your motorcycle and please ride safely.**

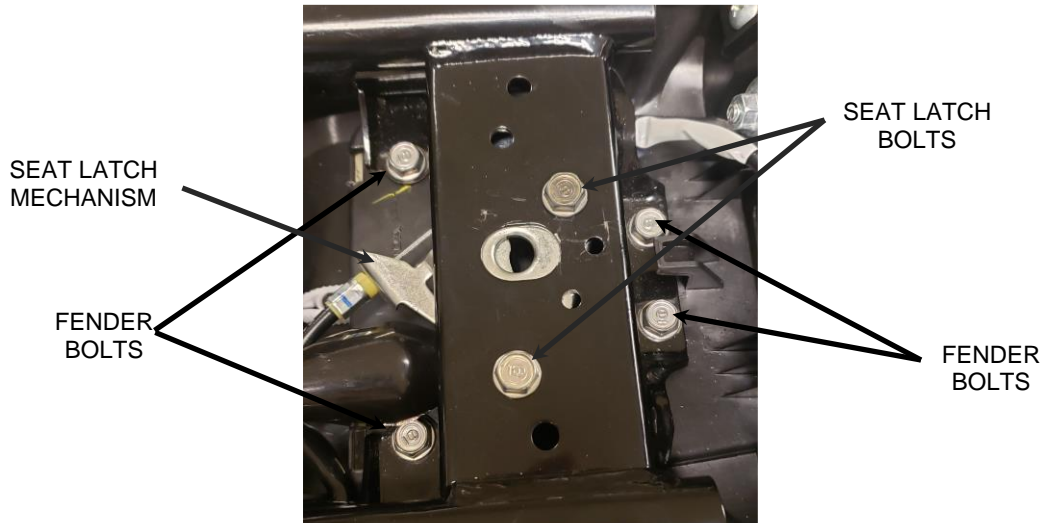


FIGURE 2

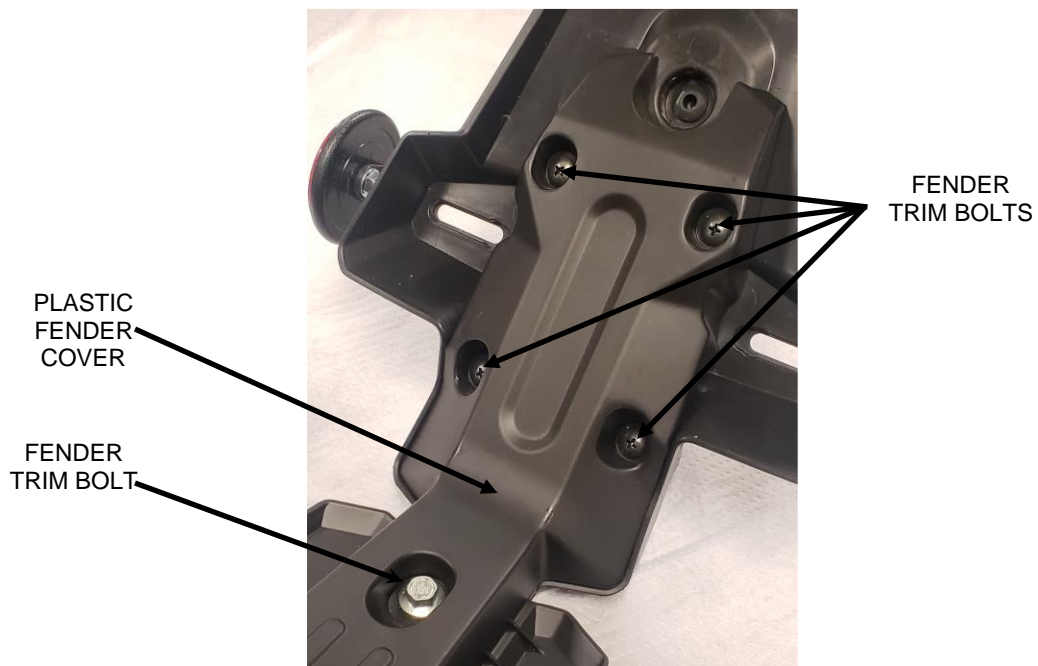


FIGURE 3

8. Remove the two nuts and spacers securing the license plate light and set aside for reuse. Remove the license plate light along with the rubber grommet from the rear fender assembly. See **Figure 5**.
9. Feed the electrical plug and rubber boot through the large center hole in the license plate relocater and install the rubber grommet into the two smaller holes on the outside of the license plate relocater. See **Figure 6**.

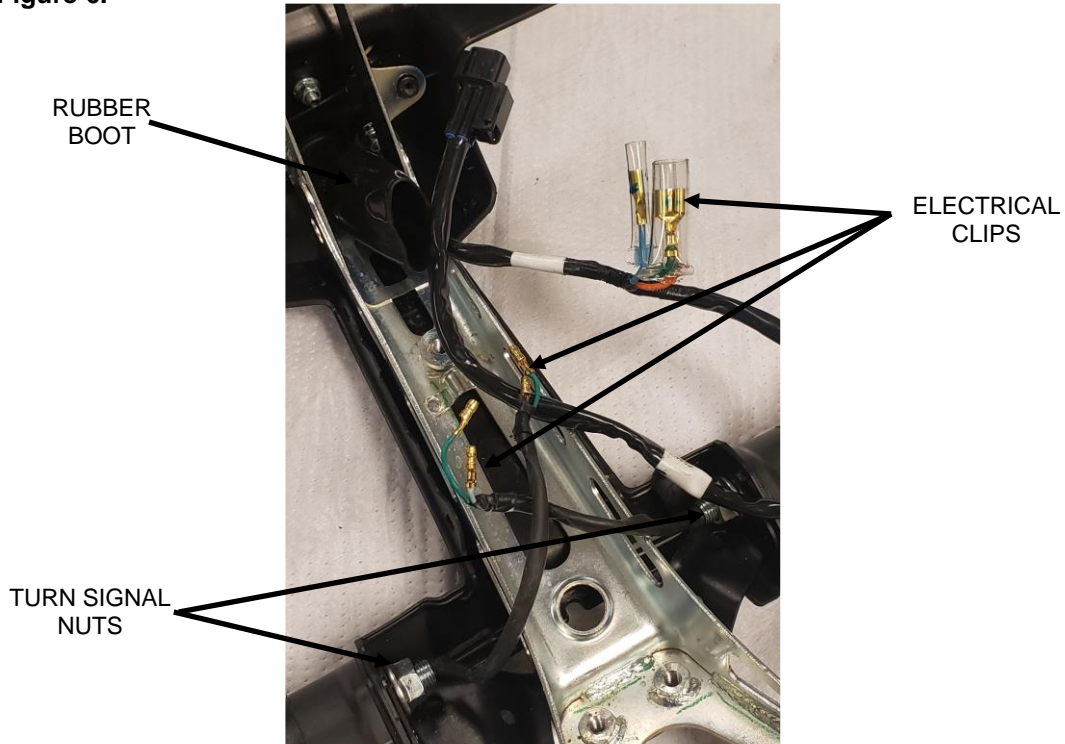


FIGURE 4

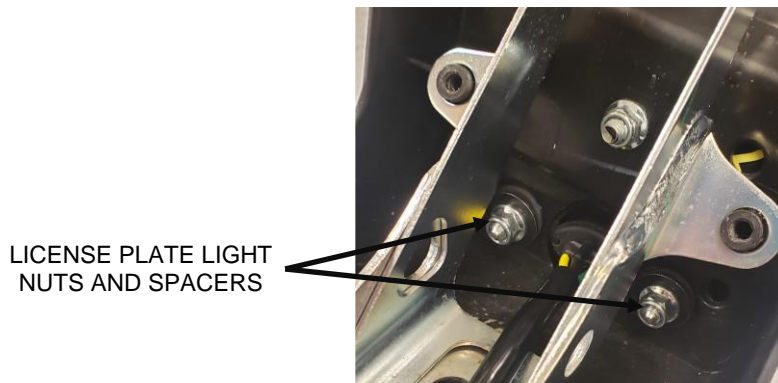


FIGURE 5

10. Install the license plate light and secure with the two stock nuts and spacers from Step 8. Make sure the light is positioned properly to shine down on the license plate. Tighten securely. See **Figure 7**.
11. Feed the turn signal electrical clips through the holes on either side of the license plate relocater and install the turn signals using the stock nuts from Step 7. Make sure the orientation of the turn signals is correct. Tighten securely. See **Figure 7**.

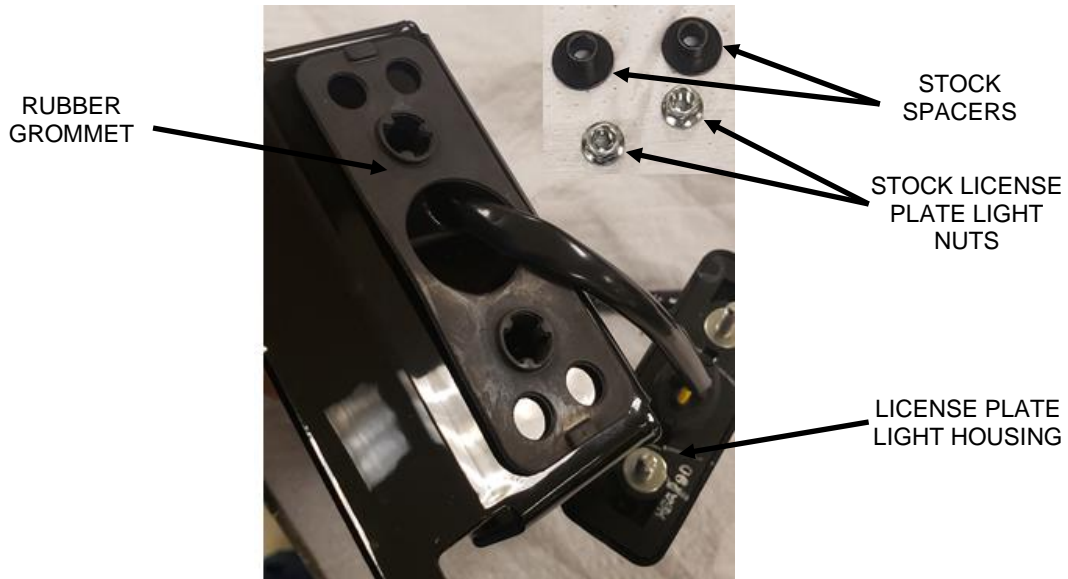


FIGURE 6

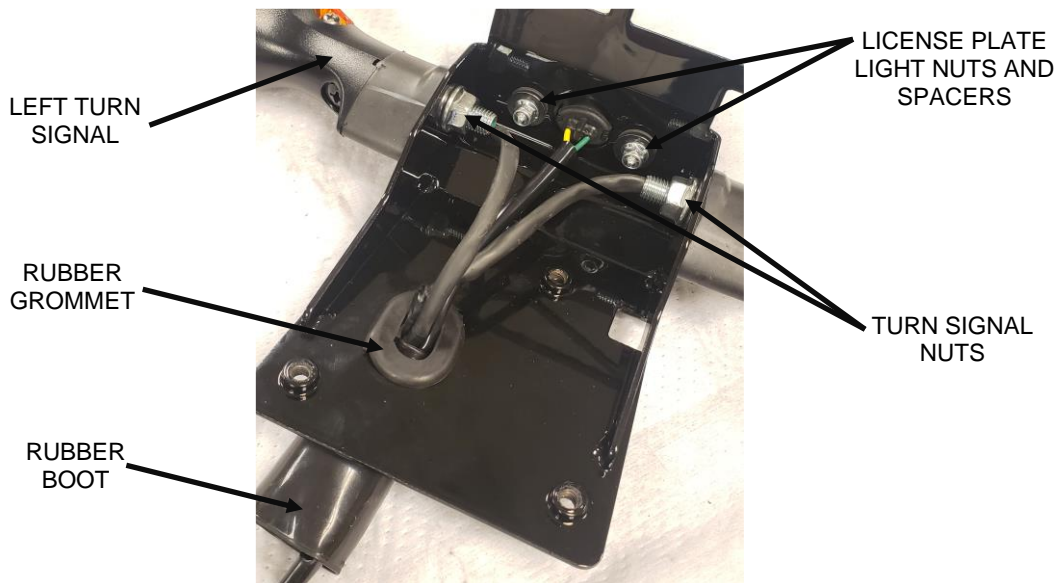


FIGURE 7

12. Reattach the four stock electrical clips from Step 6. Make sure to correctly match the clips to their corresponding colors and check that the clips are connected securely. HINT: Use needle nose pliers to help insert the male end of the clips into the female clips. Slide the rubber boot back over the electrical clips and ensure there are no exposed clips. See **Figure 7**.
13. Feed the electrical plug and the rubber boot covering the electrical clips up through the rubber grommet in the license plate relocater. See **Figure 7**.
14. Carefully feed the electrical plug and the rubber boot back through the plastic hole in the motorcycle subframe and position the license plate relocater in place of the rear fender assembly. Hold up the license plate relocater while positioning the rubber boot in the open space in the motorcycle subframe. Route the wiring harness in its stock position and reconnect the electrical plug. Make sure that there is not tension on any of the wires or electrical clips. See **Figure 8** and **Figure 1**.
15. Install the license plate relocater by inserting the four stock bolts from Step 4 through the motorcycle subframe bracket and into the threaded bosses in the license plate relocater. Tighten securely. See **Figure 2**.
16. Reinstall the seat latch mechanism with the stock bolts from Step 3 and tighten securely. See **Figure 8** and **Figure 2**.
17. Reinstall the rider seat. **NOTE: Test license plate light, hazard lights, and both turn signals for functionality before riding.**
18. Check the tightness of all hardware after the first ride, after the first 500 miles, and at every engine service thereafter

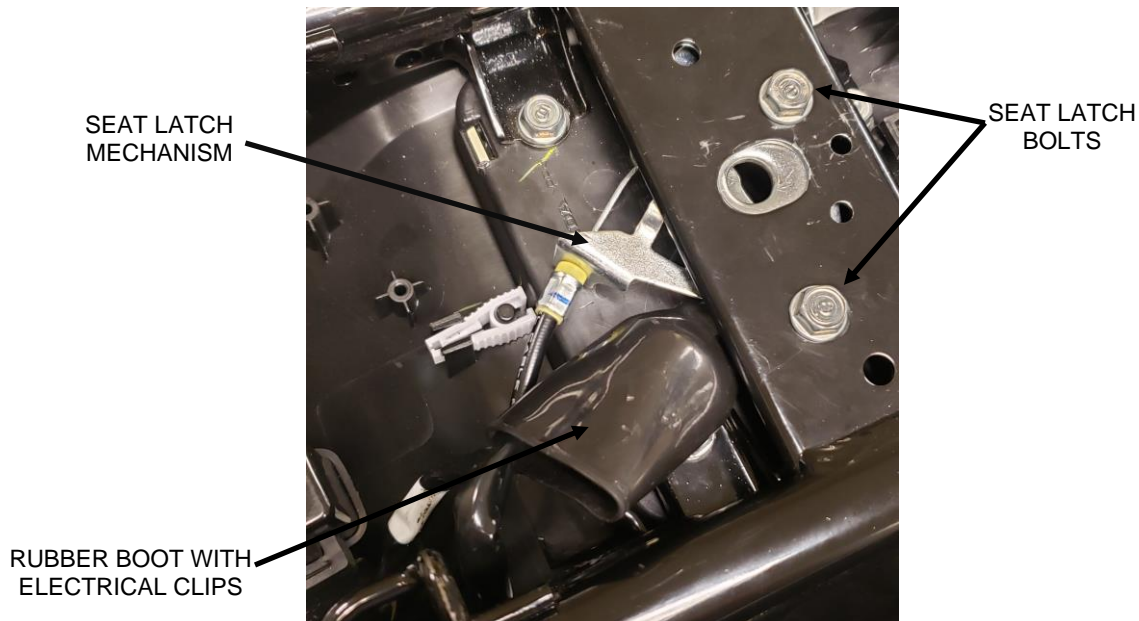


FIGURE 8

To clean your black accessory use a liquid based soap detergent, such as dishwashing soap applied with a soft cloth and rinse with clean water. **Note: Avoid abrasive cleaning methods such as granular or dry cleansers, simple green, Scotch-Brite or steel wool pads. Abrasives may breach the coating and shorten life.**